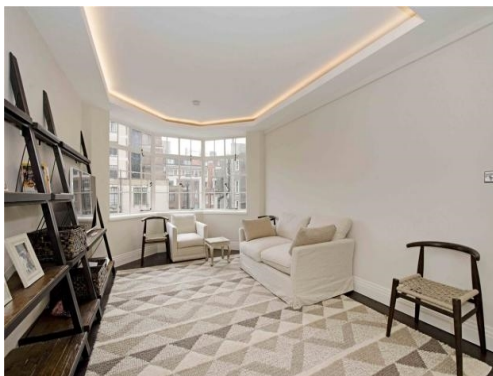


Portland Place, , W1B

£1,395,000 Leasehold



Resi London
106 Great Portland Street
London, W1W 6PF
T. +44 (0)20 7436 7191
F. +44 (0)20 7436 7261
E. lettings@resilondon.com
W. www.resilondon.com

Portland Place, , W1B

£1,395,000 Leasehold

A beautifully refurbished 2 bedroom flat set on the 3rd floor on the much sought after Portland Place. The property has been completely renovated by the current owner to a very high standard and is in immaculate condition. This property is ideal for an owner occupier or as a London Pied de terre

Local Amenities

Portland place is well situated for easy access to all the shopping and local cafes as well as excellent eateries of both Marylebone High Street and Fitzrovia. The extensive shopping of Regent street and Oxford Circus is only a 10 minute walk away. One also benefits from the beautiful open spaces Regent's park only a 5 minute walk away .

Local Transport

Portland Place is serviced by Regent's Park Tube (Bakerloo Line) Great Portland Street (Circle District, Metropolitan and Hammersmith lines) as well as all the extensive bus services running along Marylebone Rd and Portland Place allowing easy access to all parts of central London.

This property benefits from:

- Flat
- 2 Beds
- 1 Reception
- 1 Bathroom
- Shower
- inc Parking



Resi London
106 Great Portland Street
London, W1W 6PF
T. +44 (0)20 7436 7191
F. +44 (0)20 7436 7261
E. lettings@resilondon.com
W. www.resilondon.com