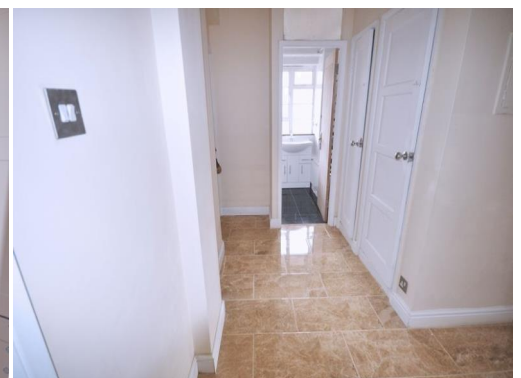


Church Street Estate, , NW8

£680,000 Leasehold



Church Street Estate, , NW8

£680,000 Leasehold

Bright and spacious four double bedroom situated in St John's Wood. The property features three double bedrooms plus a fourth double bedroom (from a converted lounge), one bathroom, a fully-fitted kitchen and a balcony. Fantastic property for students or professional sharers.

LOCAL AMENITIES:

The building is located moments away from the boutique shops and bustling cafes and restaurants of St. Johns Wood High Street and the open space of Regent's Park and Primrose Hill.

LOCAL TRANSPORT LINKS:

Public transport links are included St John's Wood Underground station (Jubilee Line) and several prominent bus routes.



This property benefits from:

- Flat
- 4 Beds
- 1 Bathroom
- Shower
- Balcony
- Lift

Resi London
106 Great Portland Street
London, W1W 6PF
T. +44 (0)20 7436 7191
F. +44 (0)20 7436 7261
E. lettings@resilondon.com
W. www.resilondon.com