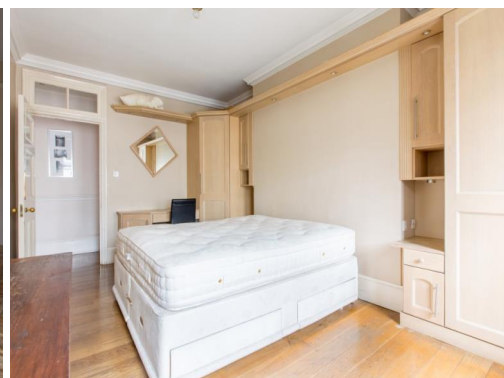


Great Portland Street, London, W1W £1,495,000 Leasehold



Resi London
106 Great Portland Street
London, W1W 6PF
T. +44 (0)20 7436 7191
F. +44 (0)20 7436 7261
E. lettings@resilondon.com
W. www.resilondon.com

Great Portland Street, London, W1W £1,495,000 Leasehold

An elegant third floor apartment with high ceilings and abundance of natural light, it's available for sale with vacant possession. It contains some of the original features including a traditional masonry style fireplaces in the double aspect living room. This property has huge potential throughout subject to planning permission. Currently laid out as two very spacious double bedrooms, separate fully fitted kitchen and eat in area, triple aspect living room and large bathroom.

LOCAL AMENITIES:

The flat is in a fantastic location, in Zone 1 between Oxford Circus and Regents Park. The famous Riding House Café is moments away, along with all the amenities of Oxford Circus shopping district, bars, shops and restaurants.

LOCAL TRANSPORT LINKS:

Nearby underground stations are Oxford Circus (Bakerloo, Victoria and Central lines), Great Portland Street (Circle, Hammersmith & City and Metropolitan lines) and Regents Park (Bakerloo line).

This property benefits from:

- Flat
- 2 Beds
- 1 Reception
- 1 Bathroom
- Shower
- Gas Central Heating



Resi London
106 Great Portland Street
London, W1W 6PF
T. +44 (0)20 7436 7191
F. +44 (0)20 7436 7261
E. lettings@resilondon.com
W. www.resilondon.com